



The **SUPRAFX** is a new high efficiency underwater fixing tool mainly intended for underwater diving works for Oil & Gas Industries and Civil Engineering Industries.

The **SUPRAFX** allows the quick and reliable fastening of threaded studs and drive pins to carry out permanent anchorings and assemblies on metal structures but also on reinforced concrete structures.

Thanks to its very robust design, it can be used up to **150m depth**. It can directly be reloaded underwater without a need to go to the surface.

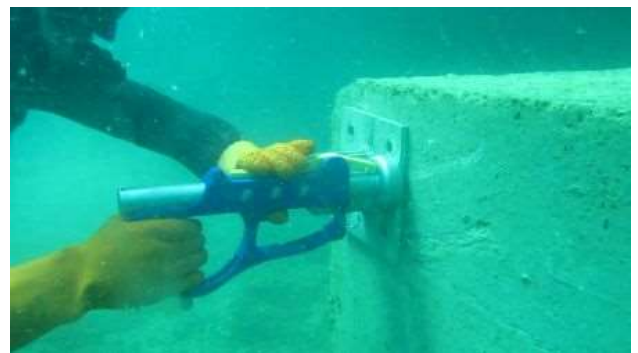
Its power is important and easily adjustable. That allows the **SUPRAFX** to cover a wide range of possible applications.

Thanks to its particular careful ergonomic design, its compactness, its lightness and its autonomy, the **SUPRAFX** is the **ideal tool** for any rapid intervention in any underwater environment.



**Applications:**

- ▶ Ship hulls emergency repair
- ▶ Sacrificial anodes installation for underwater cathodic protection
- ▶ Underwater cables and conduits installation
- ▶ Marine structures Strengthening in steel or concrete
- ▶ Marine salvage and wreck removal
- ▶ Building of underwater structures and offshore platforms maintenance
- ▶ Deep water dams maintenance (100m)



**Benefits and advantages:**

- ▶ Important time-saver in comparison to traditional methods of welding and chemical sealing
- ▶ Easy implementation
- ▶ Lightweight, compact and easy to handle
- ▶ Always ready for use
- ▶ Reliable and reproducible performances independent from the operator's skills



Our Energy Your Power

TECHNICAL DATA SHEET  
No. FTE0001\_V10  
UNDERWATER FIXING TOOL  
SUPRAFIX  
REF. 0150\_001\_000

### Safety and Certifications:

The operational safety of the **SUPRAFIX** is a strong point of its design.

The **SUPRAFIX safety technology is patented:** International WIPO Patent Application WO/2010/139866.

The **SUPRAFIX** tool is certified according to the requirements of the "Commission Internationale Permanente" (CIP) under No. 001151 in the "powder actuated devices for industrial use" category.

The **SUPRAFIX** is also compliant with the safety requirements as defined in the European Directive No. 2006/42/EC.

The EC exam attestation is No. **2223/5471/780/06/11/0013** issued by the "Banc National d'Epreuve de Saint-Etienne": European notified organism No. 2223.



### The **SUPRAFIX** is composed of:

- ▶ A compact fixing tool
- ▶ Energetic propellers
- ▶ Fasteners: Threaded Studs and Drive Pins



### Energetic propellers:

3 power levels:

↘ **GREEN : LOW**



↘ **YELLOW : MEDIUM**



↘ **RED : HIGH**



The energetic propellers are compliant with the safety requirements as defined in the European Directive No. 93/15/CEE.

The EC exam attestation is No. **0080.EXP.10.0006** issued by the "Institut National de l'Environnement Industriel et des Risques" (INERIS): European notified organism No. 0080.



Our Energy Your Power

**TECHNICAL DATA SHEET**  
**No. FTE0001\_V10**  
**UNDERWATER FIXING TOOL**  
**SUPRAPHIX**  
**REF. 0150\_001\_000**

**Fasteners:**

The fasteners are made of high strength steels.

The fasteners are available in alloy steel or stainless steel (**SupraSteel**).

The SupraSteel fasteners have been specifically designed for the sacrificial anodes installation.

**Characteristics:**

**Threaded Studs**



**Concrete support:**

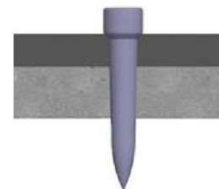
Tear strength in a healthy concrete structure with 35MPa:  
**20KN**



**Steel support:**

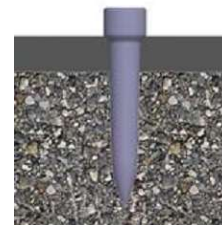
Tear strength in a mild steel S235 wall with a thickness of 20mm:  
**45KN**

**Drive Pins**



**Steel on steel:**

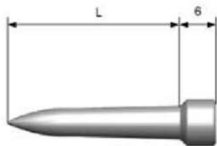
Tear resistance of an assembly of two plates of mild steel S235, 10 mm on 15 mm:  
**45KN**



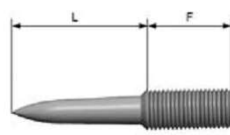
**Steel on concrete:**

Tear resistance of an assembly of a S235 mild steel plate over concrete. Plate of 8 mm and concrete at 35 Mpa :  
**15 KN**

**DRIVE PINS**



**THREADED STUDS**



Use	Type	Designation	L (mm)	F (*) (mm)
Steel	Drive Pin	L320	32	-
	Threaded Stud	L320-F250	32	25
Concrete	Drive Pin	L630	63	-
	Threaded Stud	L580-F250	58	25

(\*): **M10**

Choosing the fasteners length is determined by the application configuration.



Our Energy Your Power

TECHNICAL DATA SHEET  
No. FTE0001\_V10  
UNDERWATER FIXING TOOL  
SUPRAPHIX  
REF. 0150\_001\_000

## PRODUCT COLOUR CONFIGURATIONS

Config. 1 – Blue & Orange



Config. 2 – Black



Authorized distributor of Suprameca:

Scantek Sp. z o.o.  
Nowodworcowa 17  
81-581 Gdynia  
Poland  
info@scantek.pl  
www.scantek.pl  
Tel: 58 620 93 60  
Fax: 58 620 03 04

