

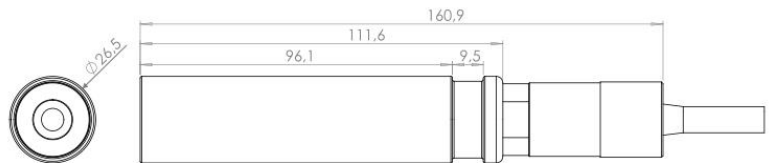
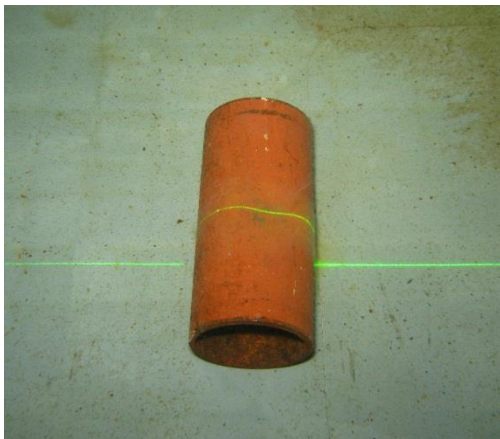


Novasub has a range of underwater lasers with various power consumption and illumination level.

Novasub developed a series of lasers that are very compact, rugged and cost-effective subsea lasers. Available as a Laser **Dot** Green 5 mW (NSLDG-1) and a Laser **Line** Green 5 mW (NSLLG-1). Both formats have been designed for a wide range of subsea pointing, scaling and ranging applications.

A Class 3B laser is hazardous if the eye is exposed directly, but diffuse reflections such as those from paper or other matte surfaces are not harmful. Protective eyewear is typically required where direct viewing of a class 3B laser beam may occur.

Brackets are available to hold two NSLDG – Novasub Laser Dot Green and an underwater camera. The NSLDG-lasers produce two parallel laser beams which may be viewed on the camera monitor and can be used to estimate the distance to an object with reasonable accuracy.



Features

- **Compact, rugged design**
- **Available in Spot, Crosshair and Line versions**
- **Mounting brackets available**
- **Depth 1000 m**

Applications

- **Subsea pointing**
- **Scaling**

Options

- **Depth 2000 & 4000 m**
- **Higher power output 10 – 100 mW**

Specifications

Laser colour	:	532nm/ Green
Power	:	5mW
Voltage Input	:	10-36 Vdc
Current Input	:	100 mA
Beam Diameter	:	~1.5 mm
Beam Mode	:	TEM ₀₀
Beam Quality (M ²)	:	< 1.1
Beam Divergence	:	< 1.2 mrad
Warm-up Time	:	< 3 seconds
Working Temp	:	20 to 35C
Storage Temp	:	-10 to 60C
Operating lifetime	:	~3,000 hours

Dimensions	:	111,6 mm x ø 26,5 mm (excl. Connector)
Material housing	:	SS 316
Weight in air	:	290 gr.
Weight in water	:	230 gr.
Operating depth	:	1000 (Optional 2000 & 4000 m)
Mounting conn.	:	Jubilee clip groove
Operating temp.	:	In water -10°C – +40°C



Related Products:

- SCC-1VL-DVR
- Novasub brackets
- NSBC
- DLR underwater cable

Distributed by: